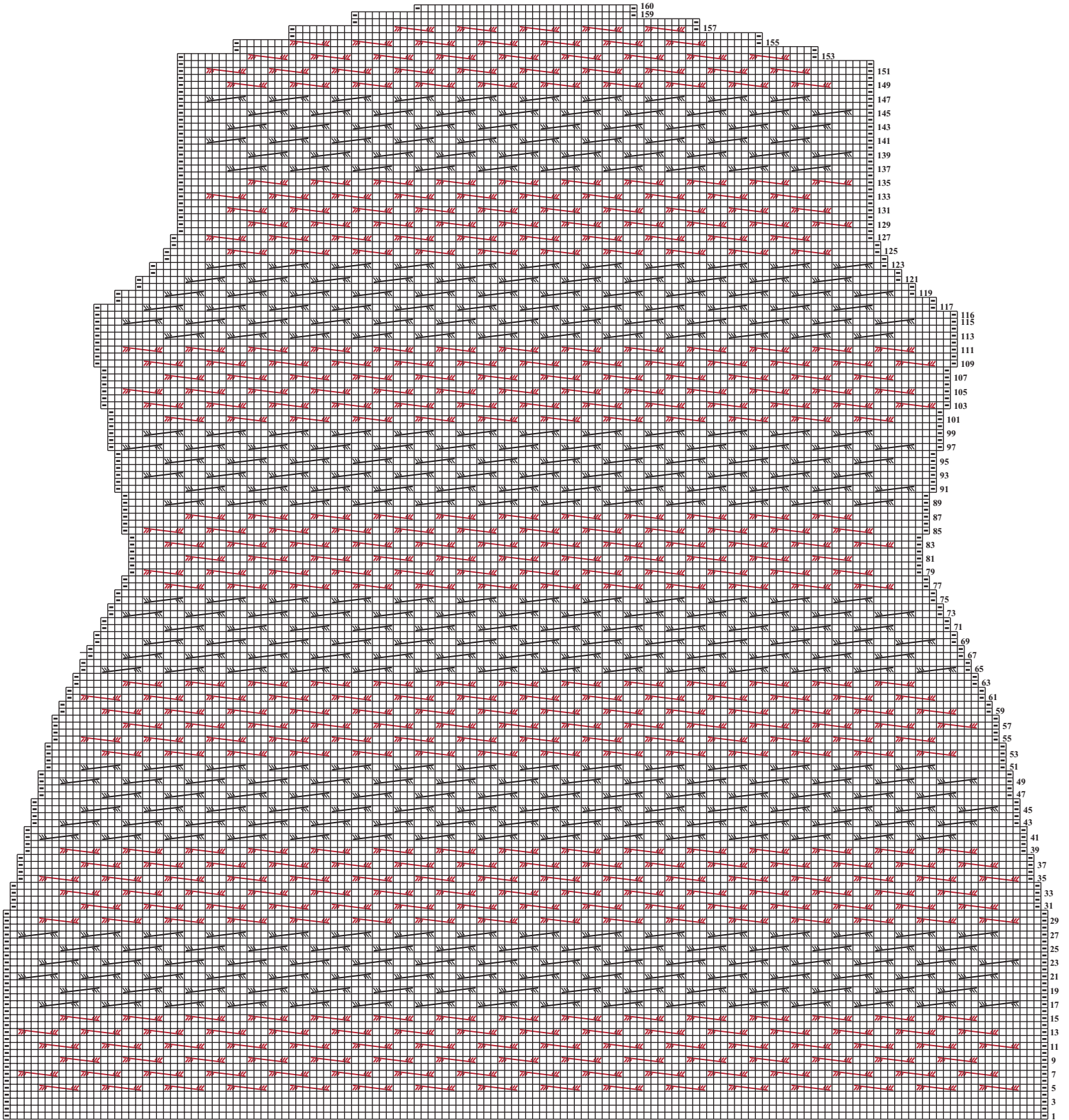


BACK, SMALL/MEDIUM



Stitch Key

- K on RS, p on WS
- P on RS, k on WS
- ▨ 6-st RC
- ▨ 6-st LC

**Cabled back instruction errata:**

*Photo on page 95, instructions begin on page 129.*

The number of selvsge sts is incorrect, it should be 4 sel sts as follows:  
**Note** When working all . . .  
 Dec'ing and inc'ing inside of these 4 selvsge sts.