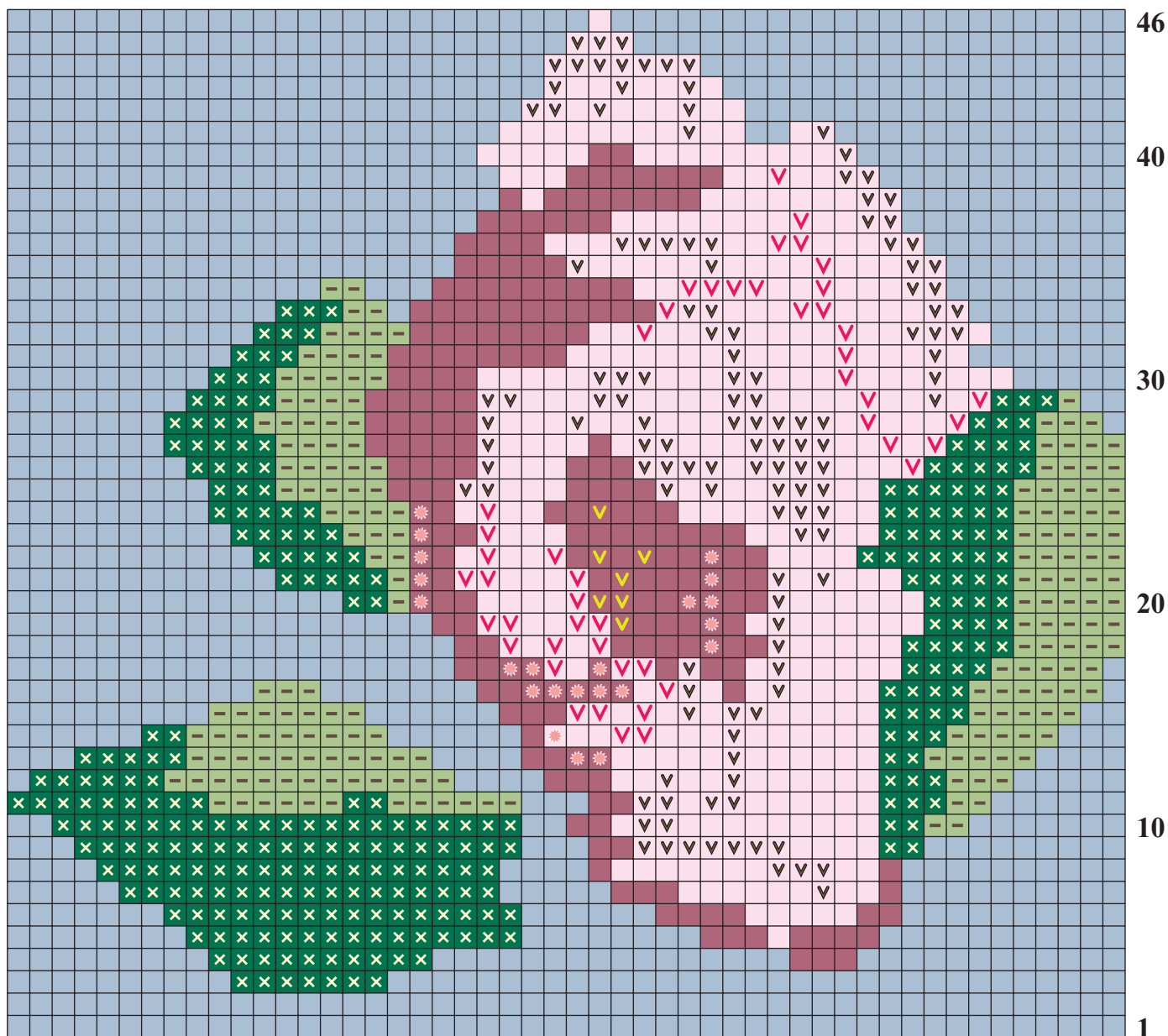


# CHART 3



50 sts

## Color & Stitch Key

- |                |                      |                             |
|----------------|----------------------|-----------------------------|
| Slate gray (A) | Dk green (H)         | Dup st w/red (D)            |
| Med pink (C)   | Med olive (I)        | or  French knot w/coral (F) |
| Deep red (E)   | Dup st w/natural (B) | Dup st w/yellow (G)         |

Using photo as inspiration and guide, work chain st embroidery with H and I around leaves and for stems.