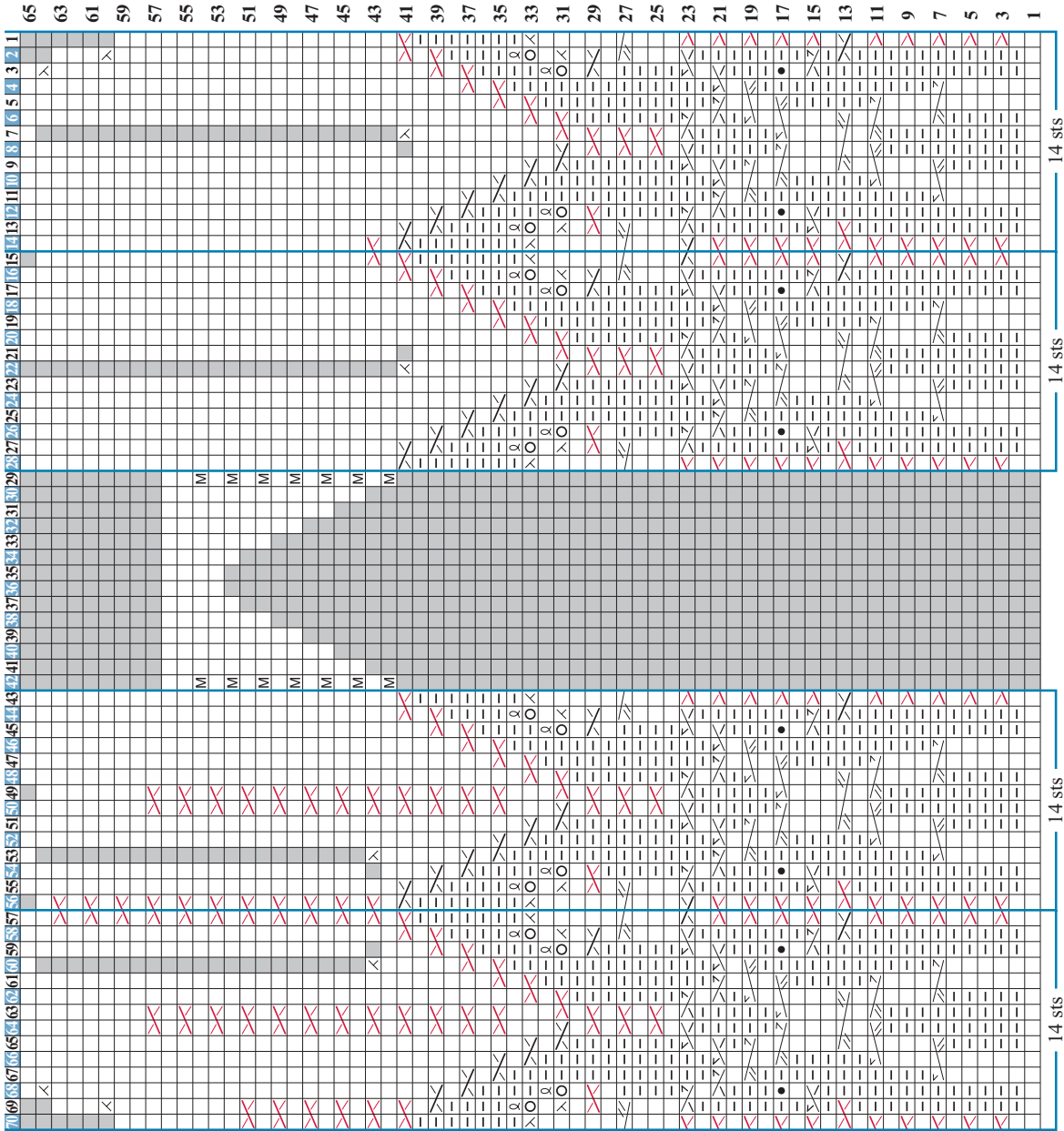


LEFT GLOVE



Stitch Key

- K on RS, p on WS
- P on RS, k on WS
- ● Yo
- ▧ K1tbl
- No stitch
- Bobble
- ▧ M1
- ▧ K2tog
- ▧ Ssk
- ▧ or RT
- ▧ or LT
- ▧ RPT
- ▧ LPT
- ▧ 3-st RPC
- ▧ 3-st LPC
- ▧ 4-st LC
- ▧ or 4-st LC