



**ERRATA 11/14/06**

## VOGUEknitting HOLIDAY 2006

### 4 LACE AND CABLE CAPELET

Photo is on page 69, instructions begin on page 107. Corrections are underlined.

#### **CAPE**

##### **FRONTS (make 2)**

Text is correct as written, use revised Chart A on the next page.

#### **BACK**

With straight needles, . . .

Work in pat foll revised chart A as established through row 51.

Next (inc) row Inc 1 st in first st, work row 52, inc 1 st in last st—111 sts. Leave sts on hold.

#### **YOKE**

Sl 39 sts from one front, 111 sts from back, 39 sts from 2nd front—189 sts.

Work Chart B through row 52, working neck shaping and side shaping as indicated, and back neck bind-off as foll:

Mark center back st.

Next row (RS) Work in pat to 10 sts before center back marker, join second ball of yarn and bind off center 21 sts, work to end—15 st rem each side. Cont to follow chart and work decreases.

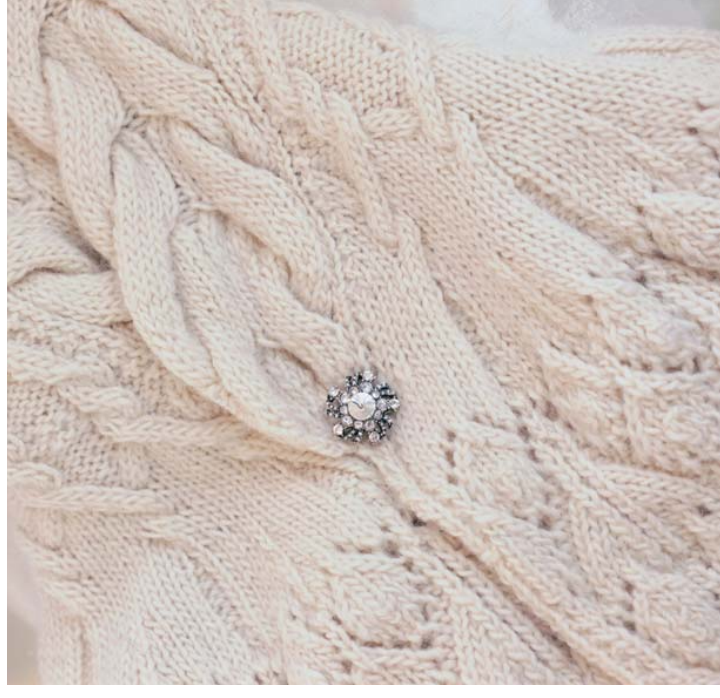
Bind off rem. 3 sts each side.

#### **COLLAR**

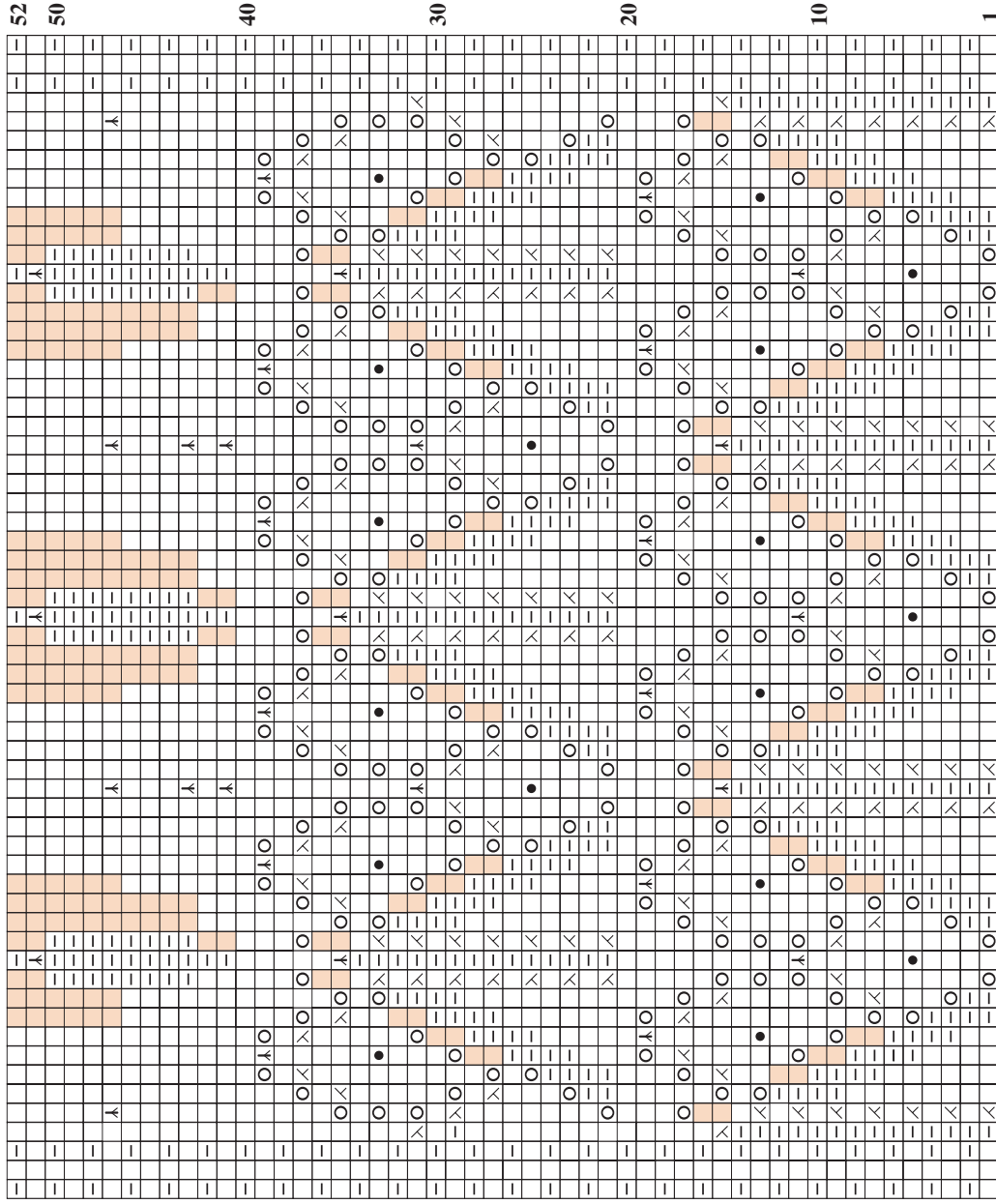
With straight needles, cast on 3 sts. Work revised Chart C through row 209, following shaping increases and decreases as indicated. Bind off rem 3 sts.

#### **FINISHING**

Work as directed in instructions. ❖



# REVISED CHART A



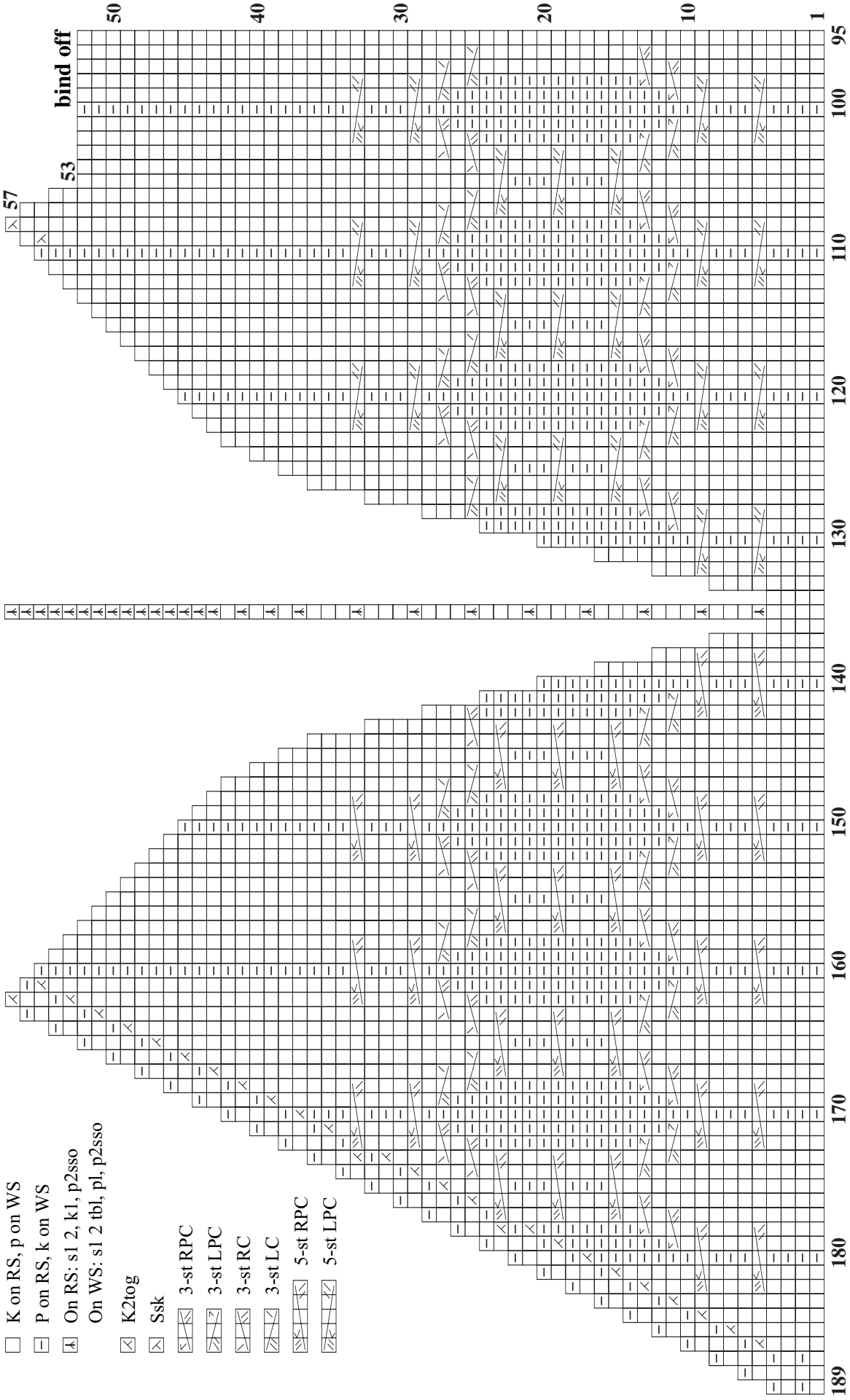
## Stitch Key

- K on RS, p on WS
- P on RS, k on WS
- Yo
- S2kp
- K2tog
- Ssk
- No stitch
- Make bobble: K into front, back and front of next st, turn, P3, turn, S2kp

**REVISED CHART B (Left Side)**

**Stitch Key**

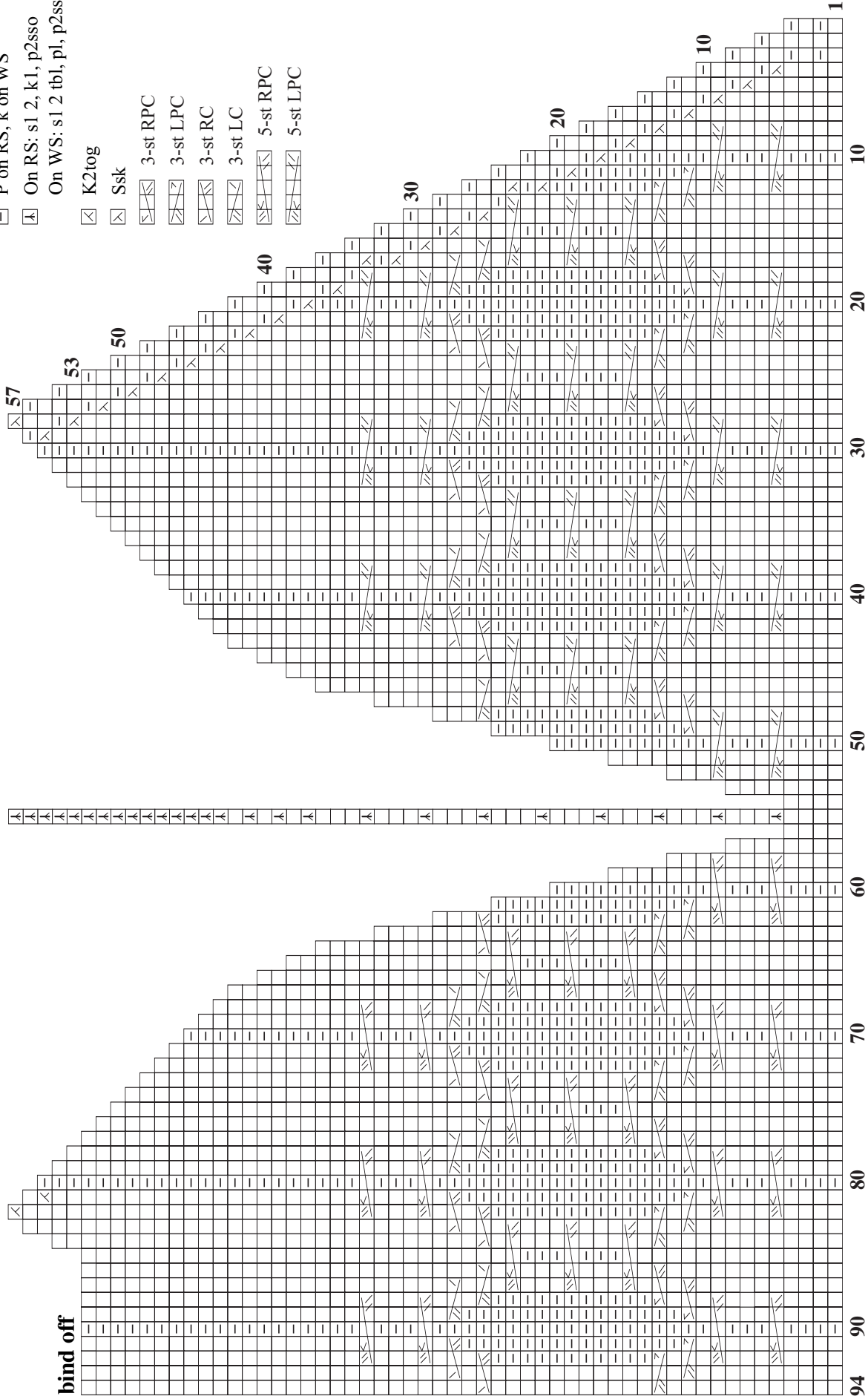
- ☐ K on RS, p on WS
- ▬ P on RS, k on WS
- ⊠ On RS: s1 2, k1, p2sso  
On WS: s1 2 tbl, pl, p2sso
- ⊞ K2tog
- ⊟ Ssk
- ⊠ 3-st RPC
- ⊡ 3-st LPC
- ⊢ 3-st RC
- ⊣ 3-st LC
- ⊤ 5-st RPC
- ⊥ 5-st LPC

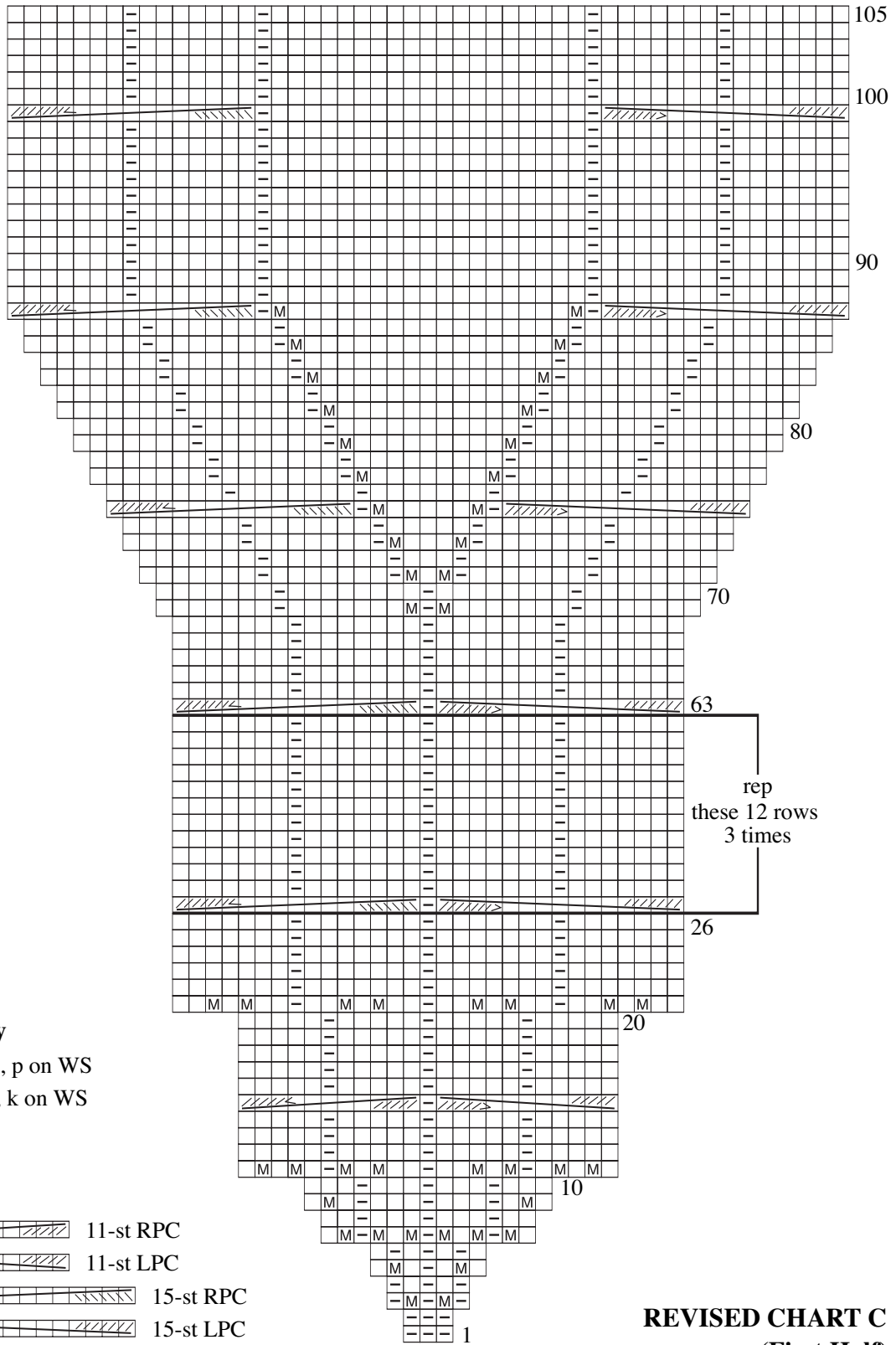


**REVISED CHART B (Right Side)**

**Stitch Key**

- K on RS, p on WS
- P on RS, k on WS
- On RS: s1 2, k1, p2sso
- On WS: s1 2 tbl, pl, p2sso
- K2tog
- Ssk
- 3-st RPC
- 3-st LPC
- 3-st RC
- 3-st LC
- 5-st RPC
- 5-st LPC





**Stitch Key**

□ K on RS, p on WS


▢ P on RS, k on WS


Ⓜ M1


⊗ K2tog

⊘ Ssk

 11-st RPC

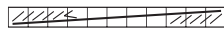
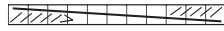
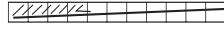
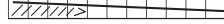
 11-st LPC

 15-st RPC

 15-st LPC

**REVISED CHART C  
(First Half)**

**Stitch Key**

- K on RS, p on WS
- ▢ P on RS, k on WS
- Ⓜ M1
- ⊗ K2tog
- ⊗ Ssk
- ⊗ S2kp
-  11-st RPC
-  11-st LPC
-  15-st RPC
-  15-st LPC

**REVISED CHART C  
(Second Half)**

